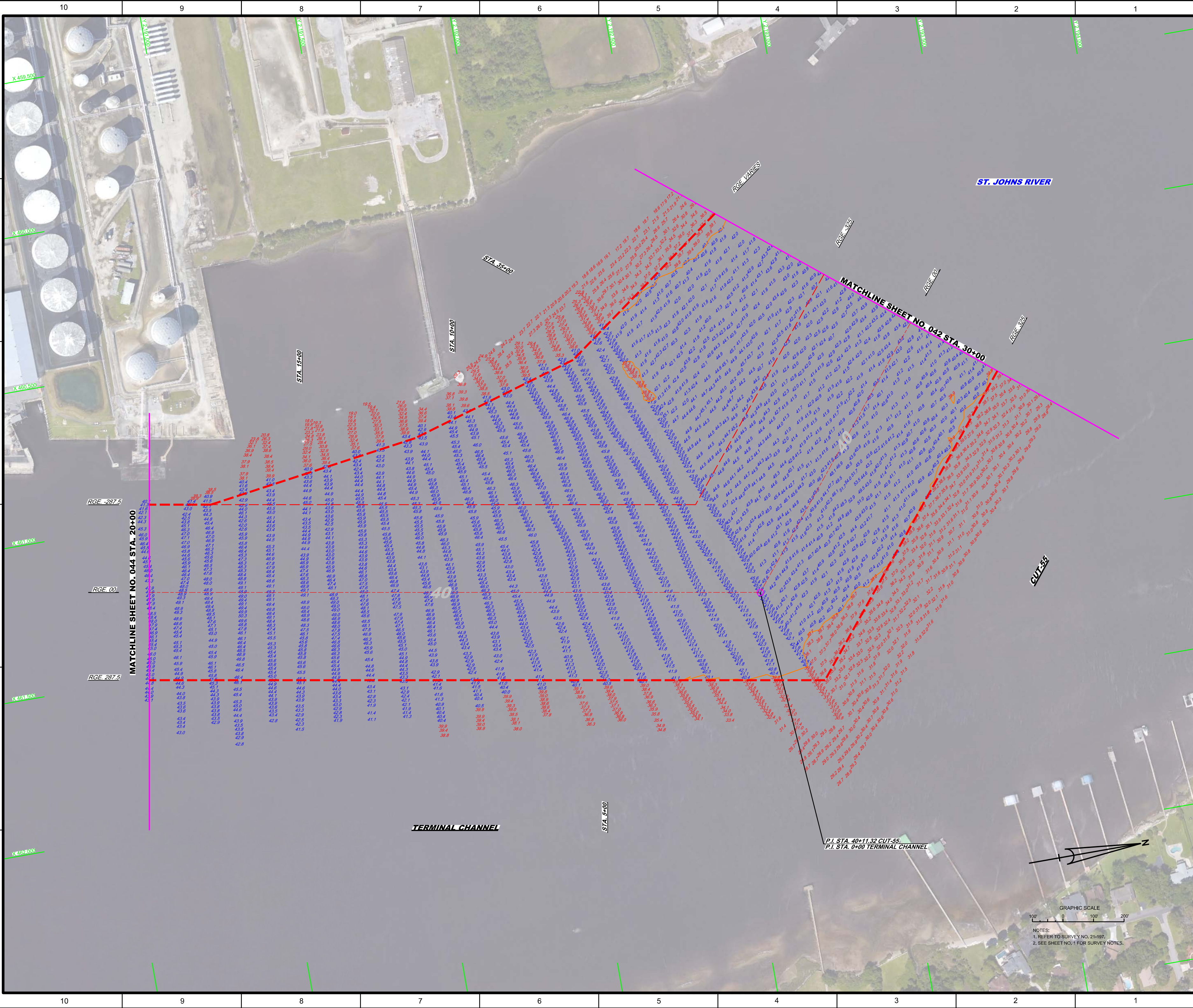



MAP LABEL	AIDS TO NAVIGATION	PLANE COORDINATES		LATITUDE	LONGITUDE
		X	Y		
RG-JUNC	R/GJUNC BUOY (08/21)	460.412	2,194.432	30°22'08.71"	81°37'14.60"

GRAPHIC SCALE
 100' 0 100' 200'
 NOTES:
 1. REFER TO SURVEY NO. 21-197.
 2. SEE SHEET NO. 1 FOR SURVEY NOTES.





US Army Corps
of Engineers
Jacksonville District

SAFETY ON THIS JOB
DEPENDS ON YOU

DEPARTMENT OF THE ARMY
JACKSONVILLE DISTRICT, CORPS OF ENGINEERS
JACKSONVILLE, FLORIDA

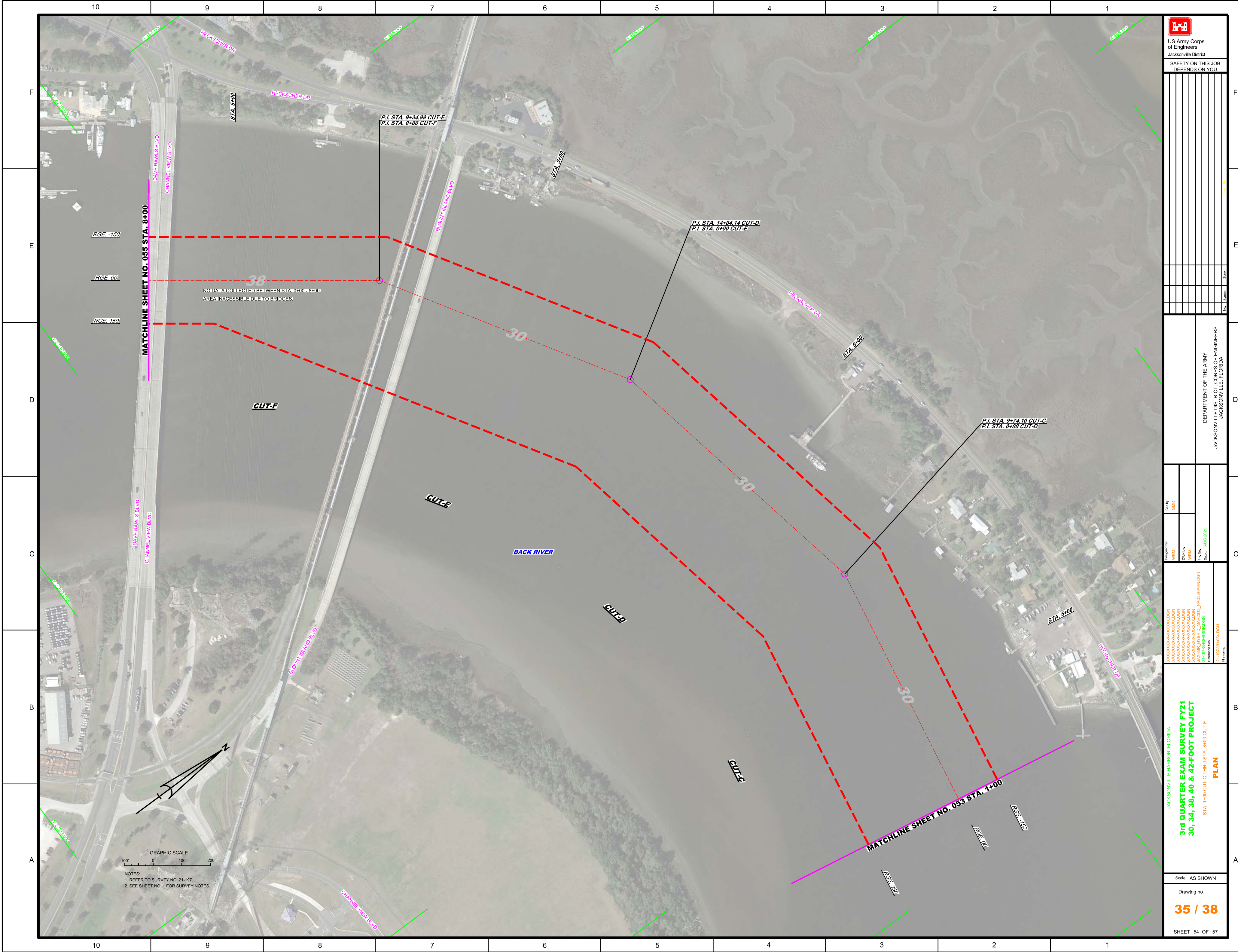
Checked By: GHR Drawn By: WRM Designated By: WRM	Date: AUG 2021 Project: 2-1974-0000-000 Drawing: 30, 34, 38, 40 & 42-FOOT PROJECT Station: STA. 30+00 CUT-55 THROUGH STA. 20+00 TERMINAL CHANNEL Reference: 2-1974-0000-000
--	---

3rd QUARTER EXAM SURVEY FY21
30, 34, 38, 40 & 42-FOOT PROJECT
PLAN

Scale: AS SHOWN

Drawing no. **32 / 38**

SHEET 43 OF 57



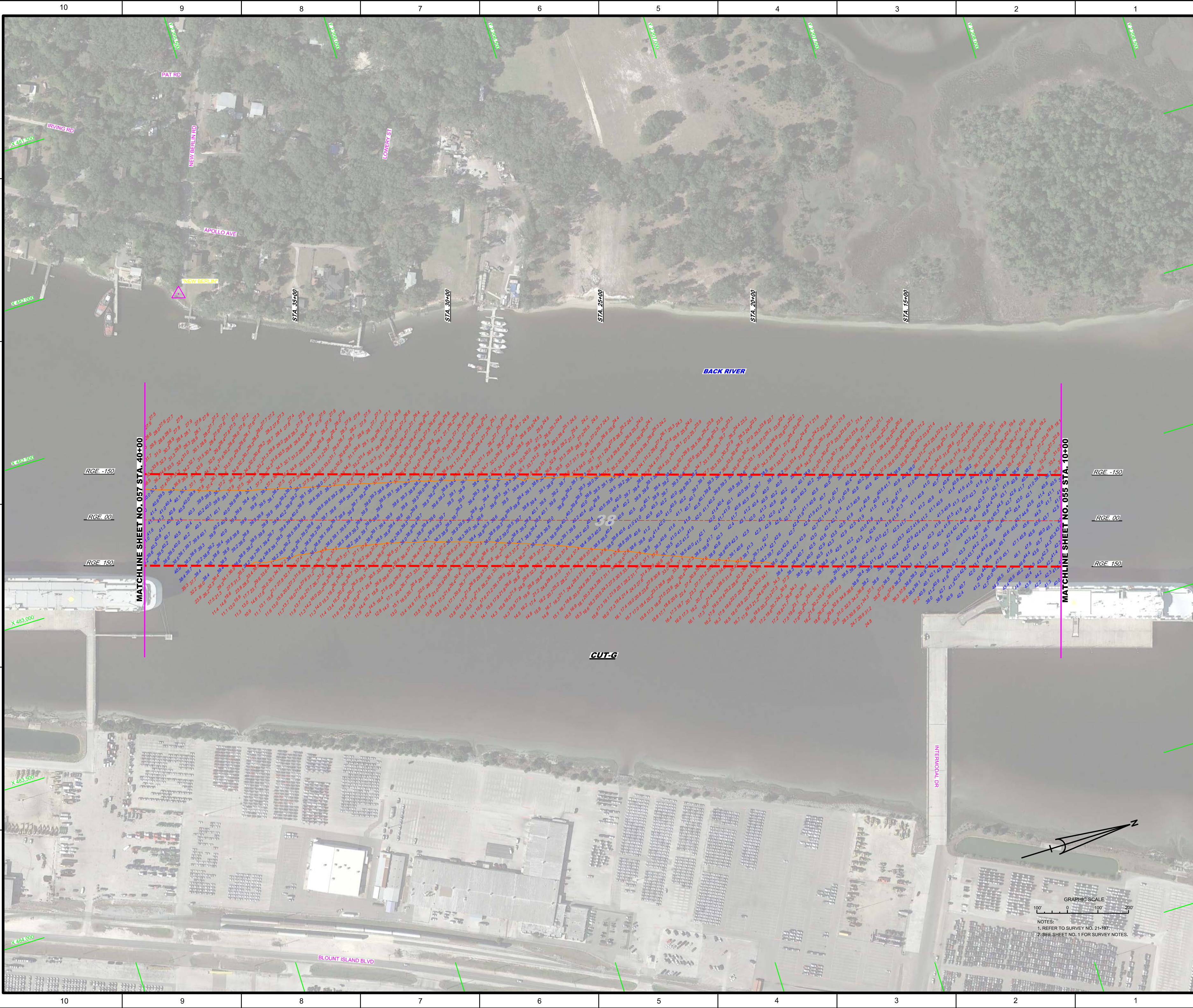
Drawn by:	WRM
Checked by:	WRM
Date:	AUG 2021

Designated by:	WRM
Checked by:	WRM
Date:	AUG 2021

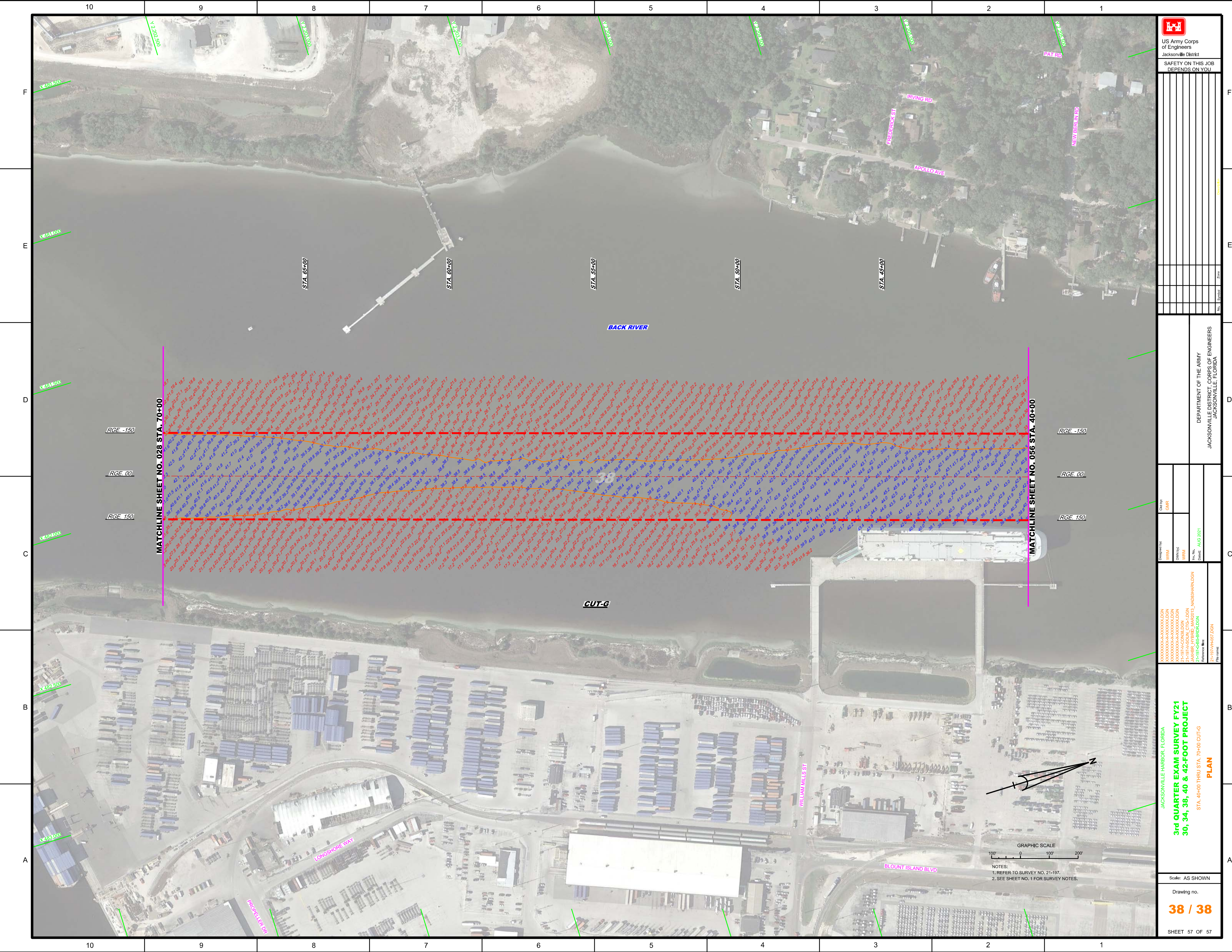
JACKSONVILLE HARBOR, FLORIDA
3rd QUARTER EXAM SURVEY FY21
30, 34, 38, 40 & 42-FOOT PROJECT
 STA. 1+00 CUT-C THRU STA. 8+00 CUT-F
PLAN

NOTES:
 1. REFER TO SURVEY NO. 21-197.
 2. SEE SHEET NO. 1 FOR SURVEY NOTES.

38
 NO DATA COLLECTED BETWEEN STA. 0+00 - 8+00.
 AREA INACCESSIBLE DUE TO BRIDGES.



<p>US Army Corps of Engineers Jacksonville District</p>	
<p>SAFETY ON THIS JOB DEPENDS ON YOU</p>	
<p>Checked By: GHR</p>	<p>Drawn By: GHR</p>
<p>Designed By: WRM</p>	<p>Checked: AUG 2021</p>
<p>2-197A-CORRIGEN.DGN 2-197A-CONSTR.DGN 2-197A-PLAN.DGN 2-197A-REFR.DGN 2-197A-REFR.DGN</p>	<p>2-197A-HARBOR.DGN 2-197A-HARBOR.DGN 2-197A-HARBOR.DGN</p>
<p>JACKSONVILLE HARBOR, FLORIDA 3rd QUARTER EXAM SURVEY FY21 30, 34, 38, 40 & 42-FOOT PROJECT STA. 10+00 THRU STA. 40+00 CUT-G PLAN</p>	
<p>Scale: AS SHOWN</p>	
<p>Drawing no. 37 / 38</p>	
<p>SHEET 56 OF 57</p>	



GRAPHIC SCALE
 100' 0 100' 200'
 NOTES:
 1. REFER TO SURVEY NO. 21-197.
 2. SEE SHEET NO. 1 FOR SURVEY NOTES.